



Green Meadow Drive, Tongwynlais, Cardiff, CF15 7LW

2 Bed • 1 Bath • 1 Recep • EPC D

£1,100 pcm

GREEN MEADOW DRIVE, TONGWYNLAIS, CARDIFF, CF15 7LW



Discover your ideal home in TONGWYNLAIS! This spacious 2 BED APARTMENT boasts stunning MOUNTAIN VIEWS and MODERN KITCHEN FACILITIES for just £1,100 pcm. Enjoy easy access to TRANSPORT, local AMENITIES, and a charming town center. A perfect blend of comfort and convenience awaits!

STEP INSIDE

Welcome to this beautifully presented 2-bedroom apartment in the heart of Tongwynlais, Cardiff, available for just £1,100 pcm. This spacious property features two generous bedrooms, complemented by modern kitchen facilities, offering you the ideal space for relaxation and entertaining. The apartment boasts breathtaking mountain views, adding a serene backdrop to your daily life.

Situated in a lovely and homely town center, this apartment provides easy access to local amenities, including shops, cafes, and parks, ensuring you have everything you need within reach. Families will appreciate the proximity to esteemed schools and green spaces for recreational activities.

Transport links are excellent, allowing quick and easy travel to Cardiff city center and beyond. Whether commuting for work or exploring the vibrant surrounding area, you'll find the connections highly convenient. Experience the perfect balance of modern living and community charm in this delightful Tongwynlais apartment.







Property Details

Property Type:	Apartment	Bedrooms:	2
Bathrooms:	1	Reception Rooms:	1
Floor Area:	1,076 sq ft	EPC Rating:	D
Council Tax:	Band C	Furnishing:	Part Furnished
Min Term:	12 months		

Energy Performance

Current Rating

D

Potential Rating

C

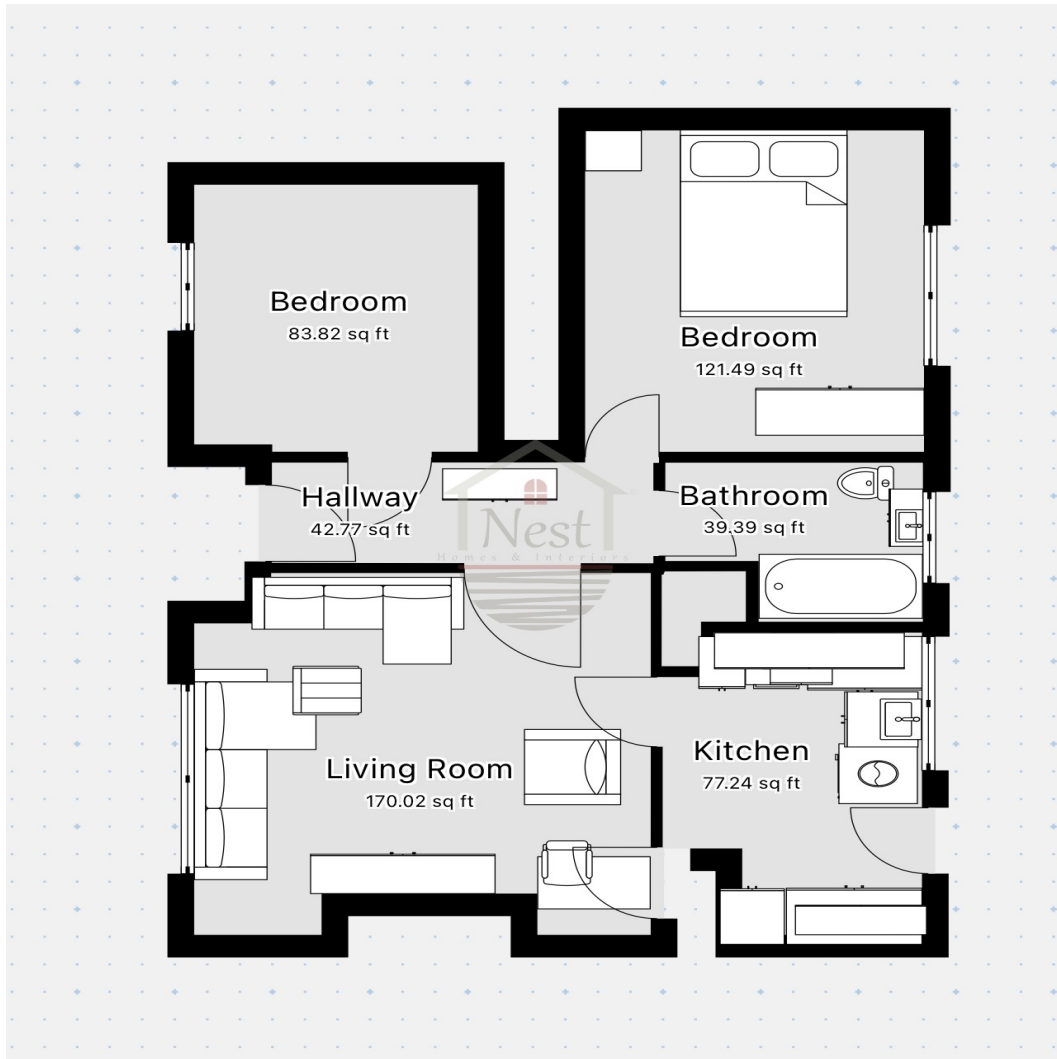
Key Features

- Spacious 2 Bedrooms
- Close To Local Amenities
- Very good transport links
- Lovely Homely Town Center
- Council Tax Band C
- Modern Kitchen Facilities
- Stunning Mountain Views
- Easy Access To Transport
- EPC Rating D
- Double Glazed Throughout

Floor Plan



Green Meadow Drive, Tongwynlais, Cardiff, CF15 7LW



Floor plan is for illustrative purposes only. Not to scale.

Property Specifications

Total Floor Area: **1,076 sq ft**

Habitable Rooms: **6**

Number of Floors: **1**

Built Form: **Semi-Detached**

Construction: **England and Wales: 1930-1949**

Your Renting Journey

We guide you through every step of the process



1

Arrange a Viewing

Book a viewing at your convenience. We offer in-person and virtual options.

2

Apply to Rent

Complete our application form and provide references for quick processing.

3

Referencing

We conduct credit checks, employment verification and landlord references.

4

Sign Agreement

Review and sign your tenancy agreement. We explain all terms clearly.

5

Pay Deposit & Rent

Pay security deposit and first month's rent. Deposit protected by scheme.

6

Move In!

Collect your keys, receive inventory, and enjoy your new home!

Ready to take the next step?

ARRANGE A VIEWING

Contact our team to book your private viewing:

Tel: 07304 006532

Email: admin@nest-homes.co.uk



Agents notes: All measurements are approximate and for general guidance only and whilst every attempt has been made to ensure accuracy, they must not be relied on. The fixtures, fittings and appliances referred to have not been tested and therefore no guarantee can be given that they are in working order. Internal photographs are reproduced for general information and it must not be inferred that any item shown is included with the property. For a free valuation, contact the numbers listed on the brochure.